

**An excellent
investment in the
present and the future.**

**Central Acres Christian
School
3204 Broadwater Ave
Billings MT 59102
406.652.1799**

Central Acres Christian School is owned and operated by the Montana Conference of Seventh-day Adventists. CACS is accredited by the North Division of Seventh-day Adventist Office of Education.

Our Mission

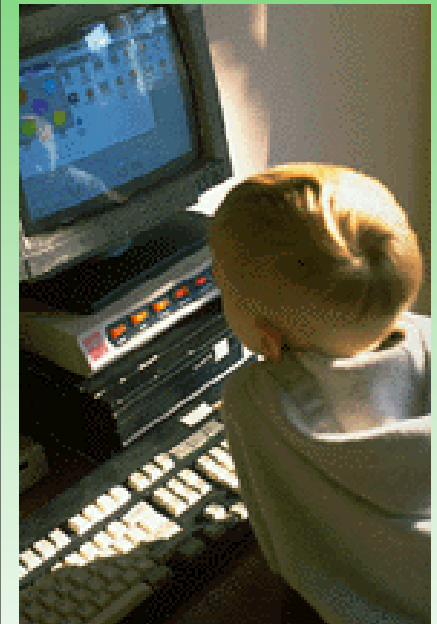
The mission of Central Acres Christian School is to share the everlasting Gospel of God's unconditional love and present Jesus Christ to students as their Personal Friend and soon coming Savior.

Our Philosophy

True education is more than the completion of an academic curriculum. It is the harmonious development of the physical, mental, and spiritual powers of the individual student through Christ-centered instruction. It is the preparation for successful citizenship in this world and the world to come. It seeks to instill the joy of unselfish service for others within the child.



Central Acres Christian School



3204 Broadwater Avenue
Billings MT 59102
Tel: 406.652.1799

Why send your child to a Christian School?

Reasons to invest in a Christian Education at Central Acres Christian School:

1. Dedicated, Christian staff
2. Small class size with more individualized attention given to each child
3. Accredited teachers
4. Christ-centered instruction and curriculum
5. Reasonable tuition
6. Convenient West End location



GRADES 1-8

SCHOOL HOURS

Monday—Thursday 8:15 a.m.—3:30 p.m.
 Friday 8:15 a.m.—1:30 p.m.

CURRICULUM

- Art
- Band/Choir
- Bible
- Computer Ed.
- English
- Handwriting
- Math
- Phonics
- Phys. Ed.
- Reading
- Science
- Social Studies
- Spelling

TUITION SCHEDULE

Entrance fee: \$ 250.00
 Tuition = \$175/mo. X 10 mo. ~~\$1,750.00~~
 \$2,000.00

Tuition discounts for families with more than one child in grades 1-8:

2nd Child \$15.00/mo. Discount
 3rd child \$30.00/mo. Discount

KINDERGARTEN PROGRAM

SCHOOL HOURS

Monday, Wednesday 8:15 a.m.—3:30 p.m.
 Friday 8:15 a.m.—1:30 p.m.

TUITION SCHEDULE

Entrance Fee: \$ 150.00
 Tuition=\$110/mo. X 10mo. ~~\$1100.00~~
 \$1250.00

ADMISSION POLICY

Central Acres Christian School accepts students of any race, color, gender, ethnic background, national origin, or religion. Enrollment is open to children of all faiths who are interested in an excellent education in a Christian environment.

ADMISSION REQUIREMENTS

A student must be at least six years old by September 10th of that year for the first grade. Kindergarten students must be five years old by September 10th.

A new student must submit:

1. Application Form
2. Birth Certificate
3. Medical Examination Report
4. Immunization Records
5. Records from other schools

TRANSPORTATION

Bus service is not provided by the school. It is the responsibility of the parents or guardians to transport students to and from school. There is a Billings MET bus stop on the corner of the school ground, and the daily schedule has been designed to accommodate children riding the city buses. The Billings MET system offers student rates on monthly passes.